



P&O GLOBAL TECHNOLOGIES, INC.
(A MEMBER OF THE PACIFIC & ORIENT GROUP)

SUPER LIVE PRO BROWSER IN WINDOWS

Follow these steps to know how to see your cameras on your browser in Windows with SuperLivePro.

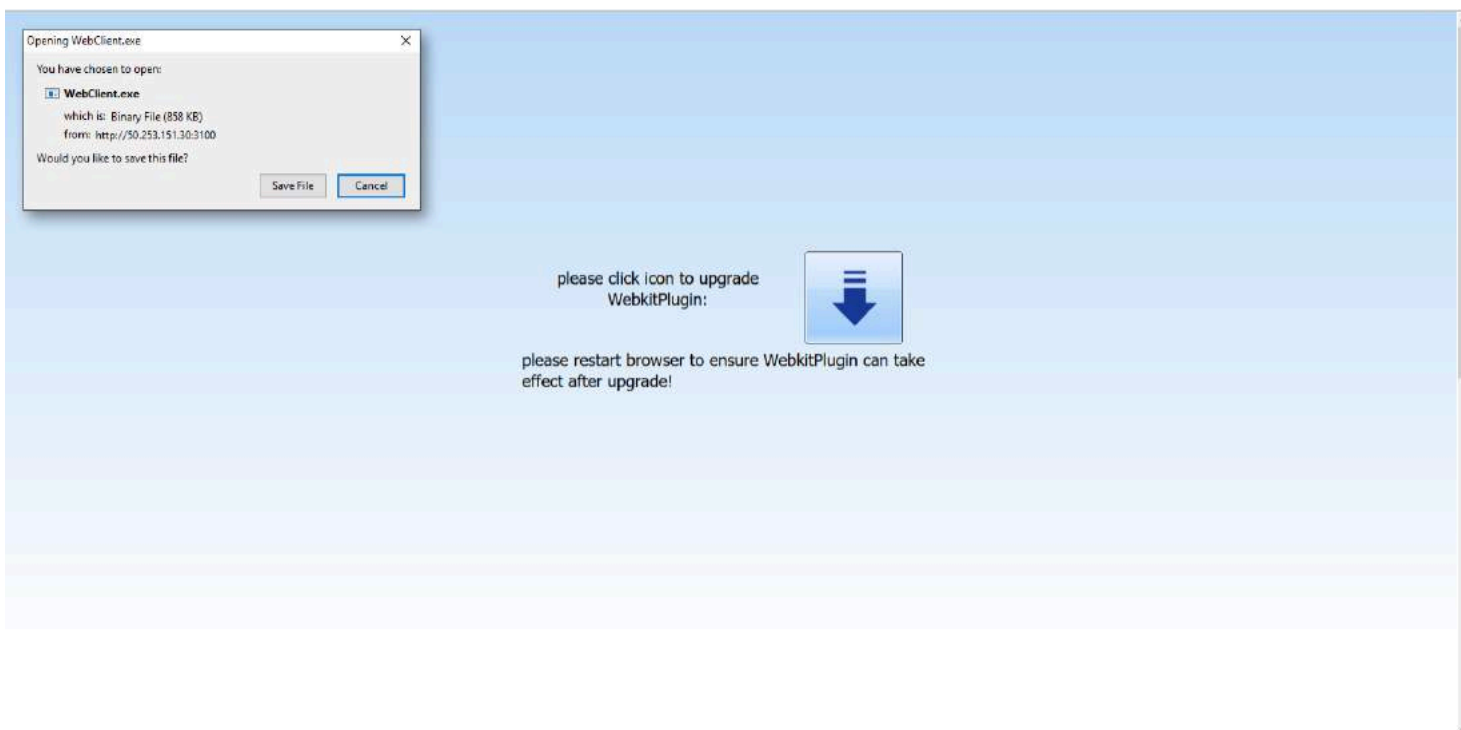
1. Enter to your browser. It will only work on: Safari, Firefox or Internet Explorer.
 2. In address bar type your IP address and HTTP port information and hit enter.
 3. Put the Username and Password given by your tech team.
- Download plugin.

please click icon to upgrade
WebkitPlugin:



please restart browser to ensure WebkitPlugin can take
effect after upgrade!

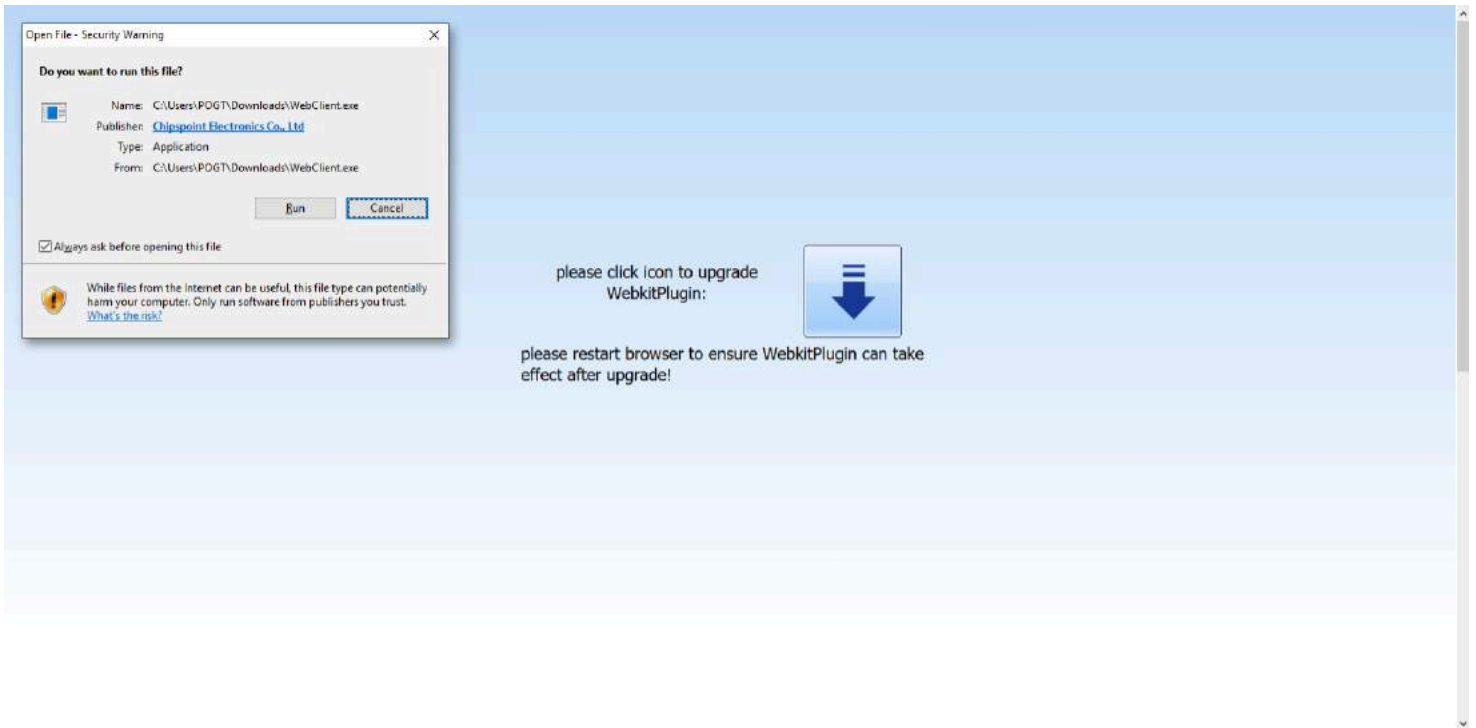
- Click Save File.



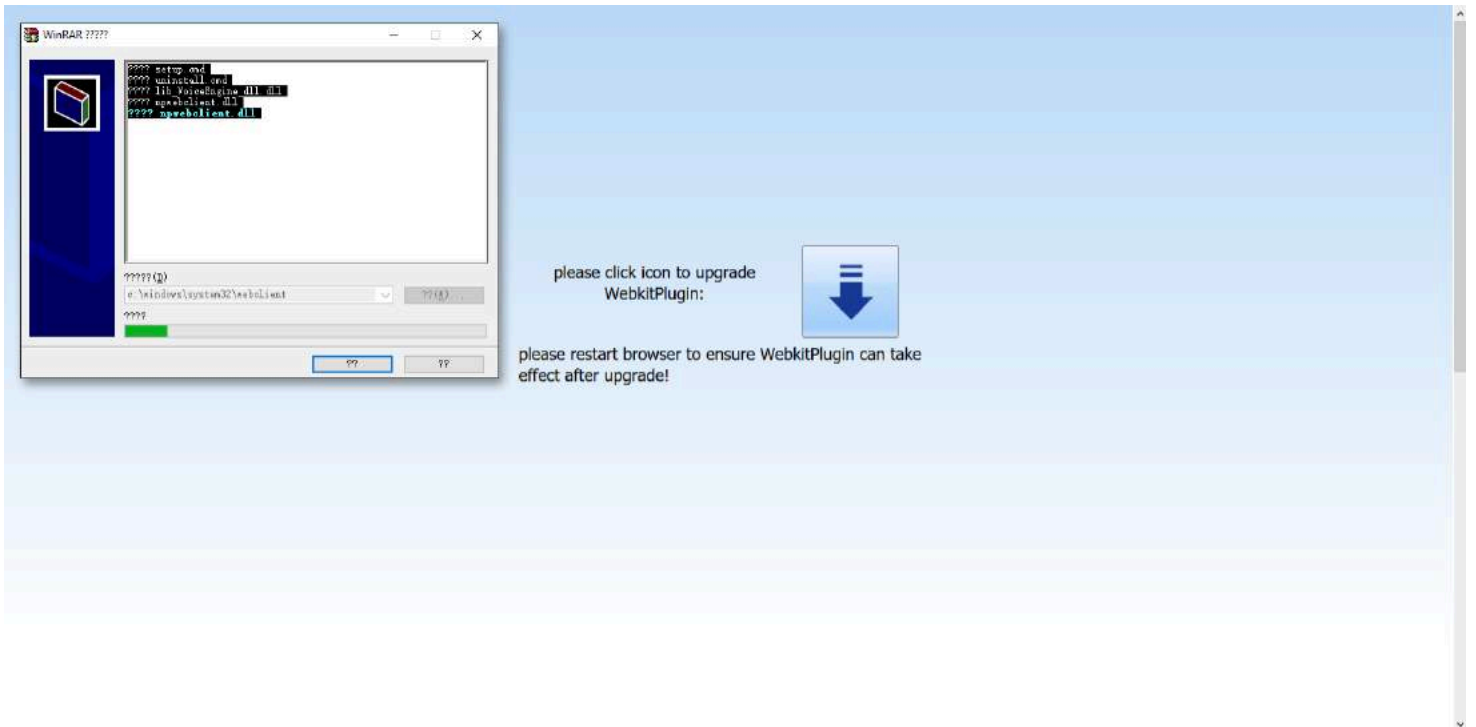
- Double click in the downloaded file.



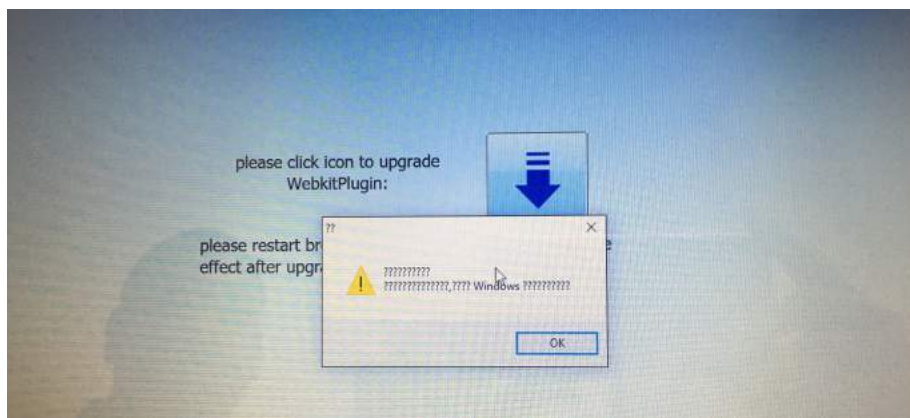
- Click Run.



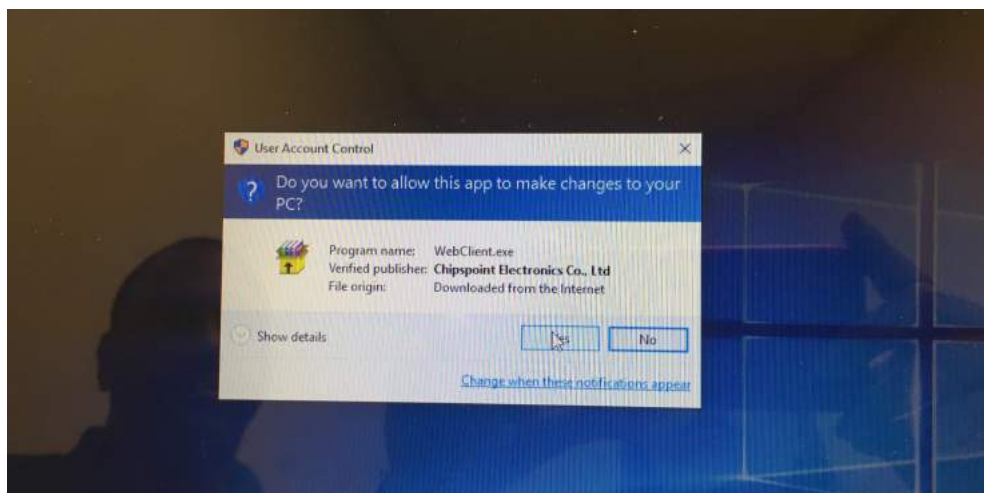
- Click in the button on the left.



- Click Ok.



- Click Yes.



- Close the browser to refresh and open it again.
- And you're done! Now you can see your cameras.