



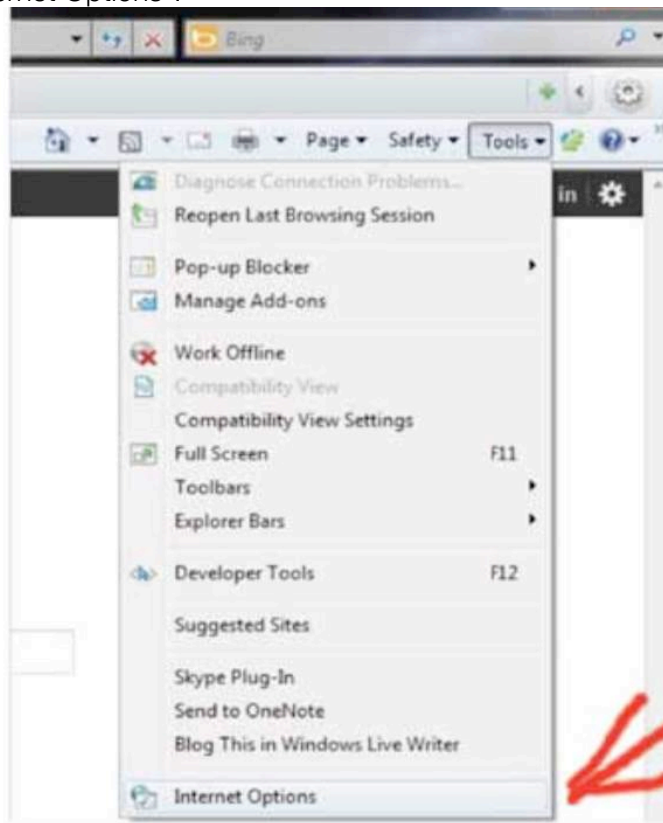
**P&O GLOBAL TECHNOLOGIES, INC.**  
(A MEMBER OF THE PACIFIC & ORIENT GROUP)

# SEE THE CAMERAS USING INTERNET EXPLORER BROWSER

Follow these steps if you want to view your Security Cameras from the Internet Explorer browser for the first time. This procedure is only for the first time and works for different versions of Windows Internet Explorer.



- Open Internet Explorer
- Click in “Tools”
- Then click in “Internet Options”.

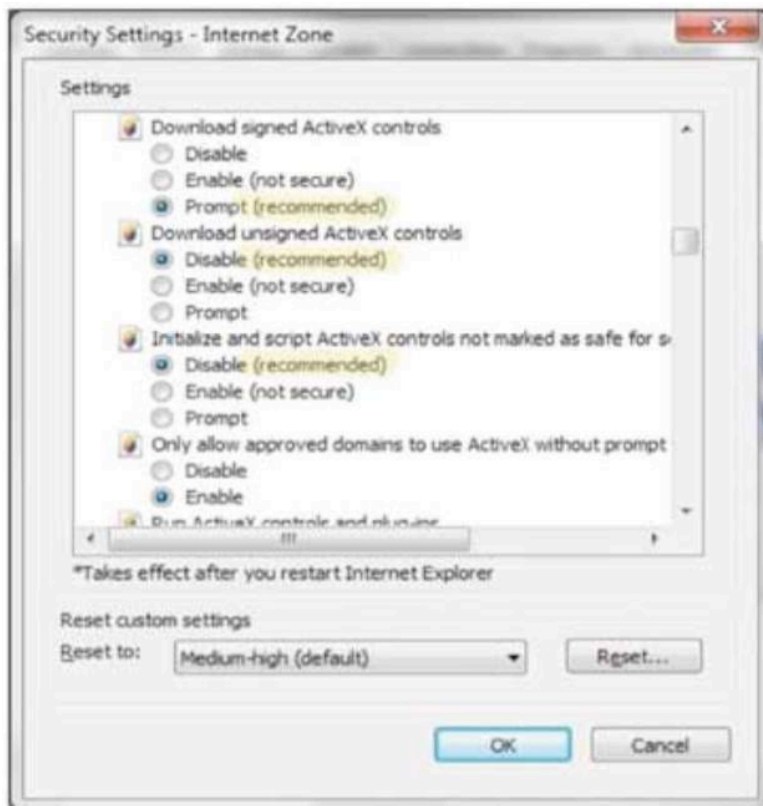
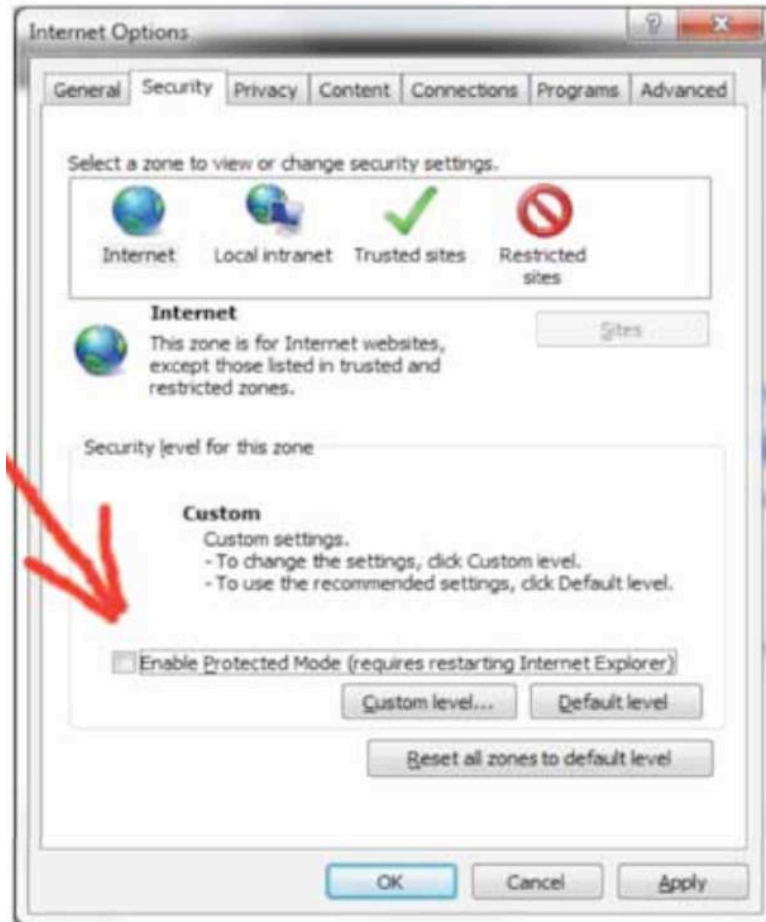


- Click on “Security” tab.



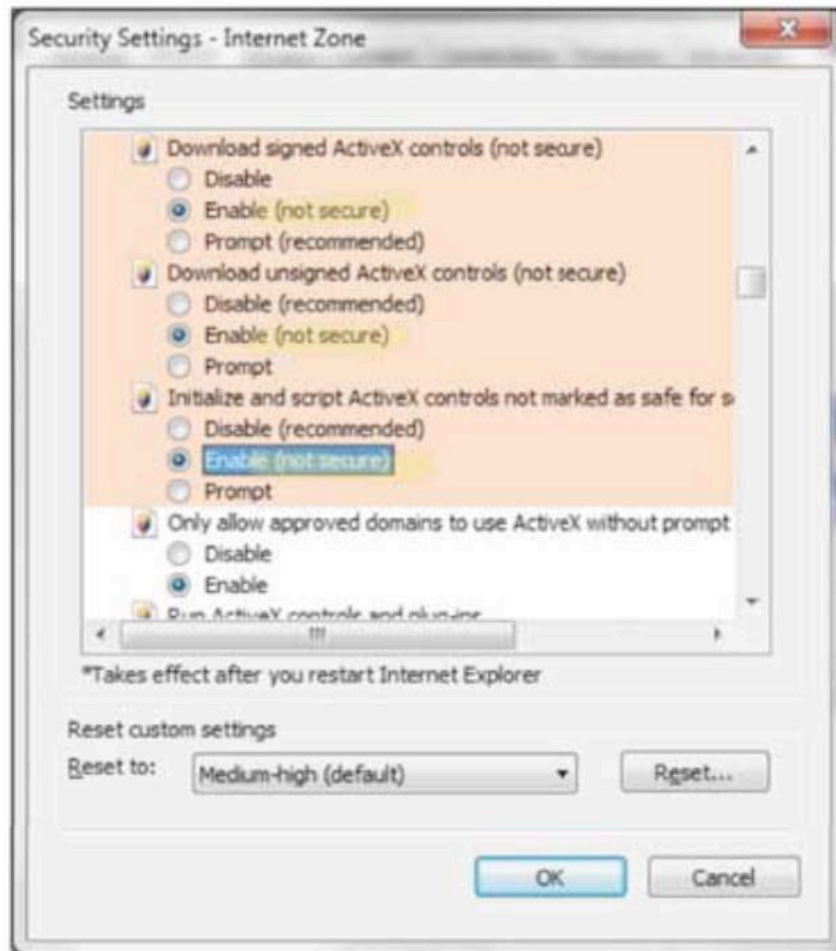
Default

- Clear the check mark “Enable Protected Mode (requires restarting Internet Explorer)”
- Click on button “Custom Level...”

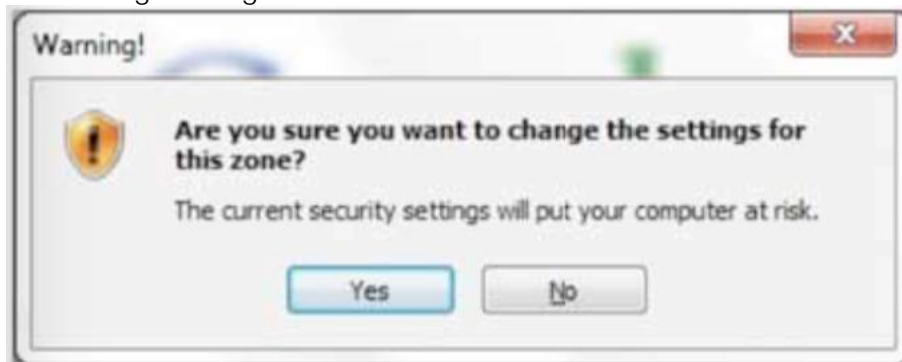


Default

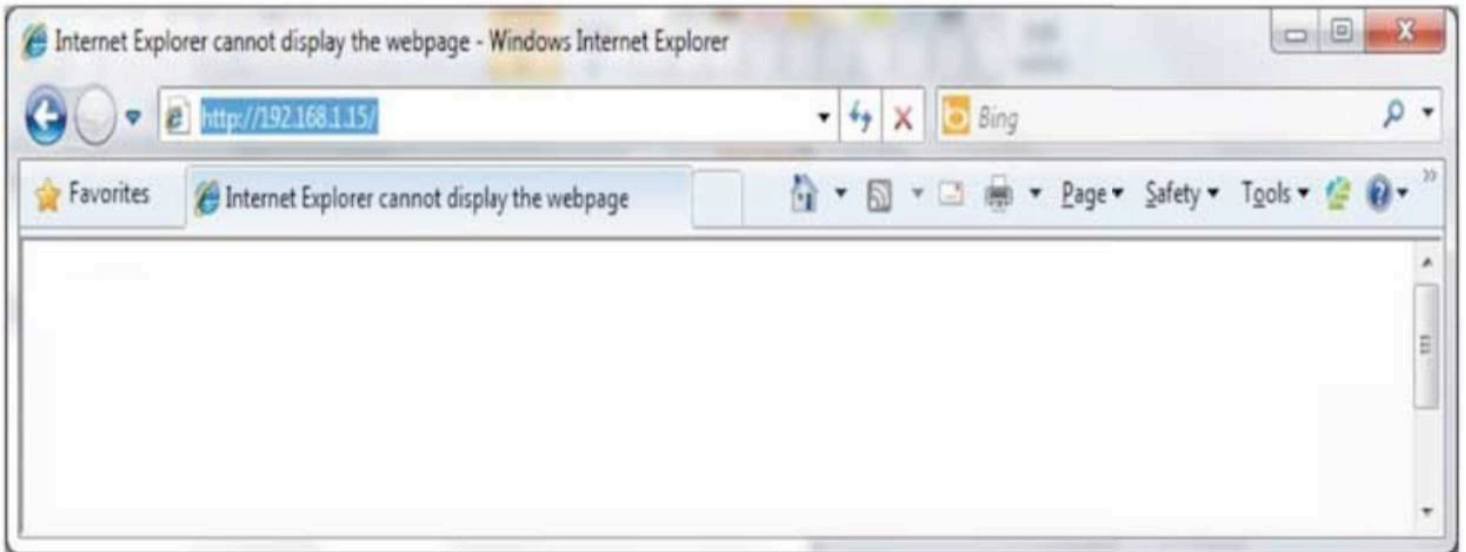
- In “ActiveX controls and plug-in”, enable next options:
  - Download signed ActiveX controls
  - Download unsigned ActiveX controls
  - Initialize and script ActiveX controls not marked as safe for scripting
- Click on button “OK”



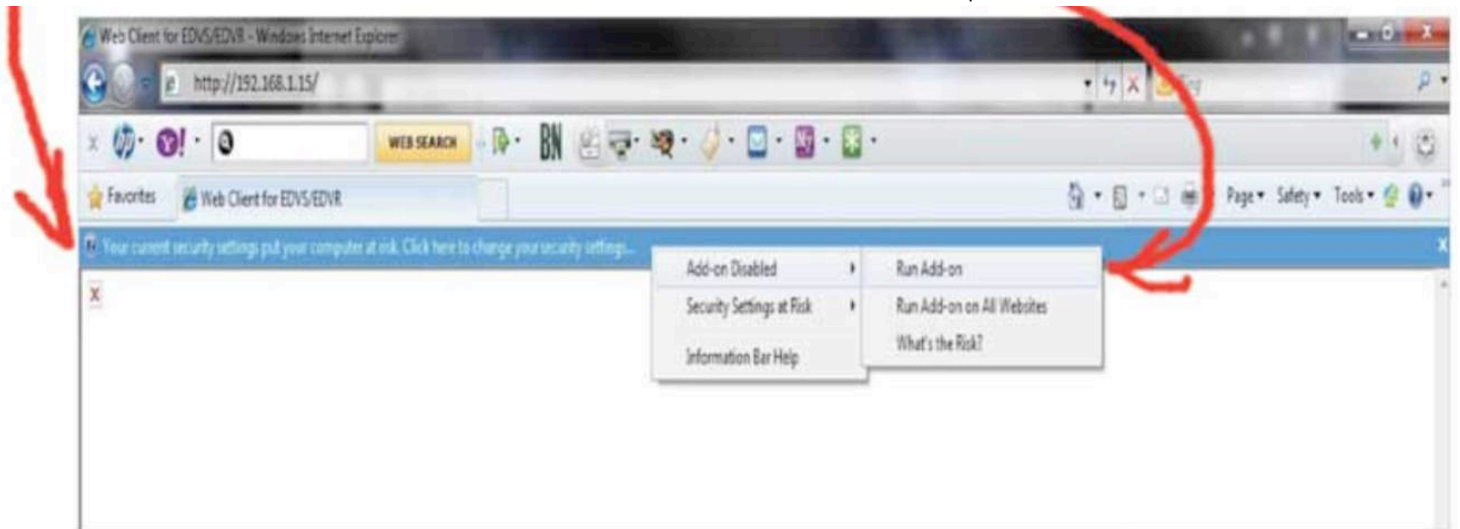
- You will receive a warning message. Click “Yes”



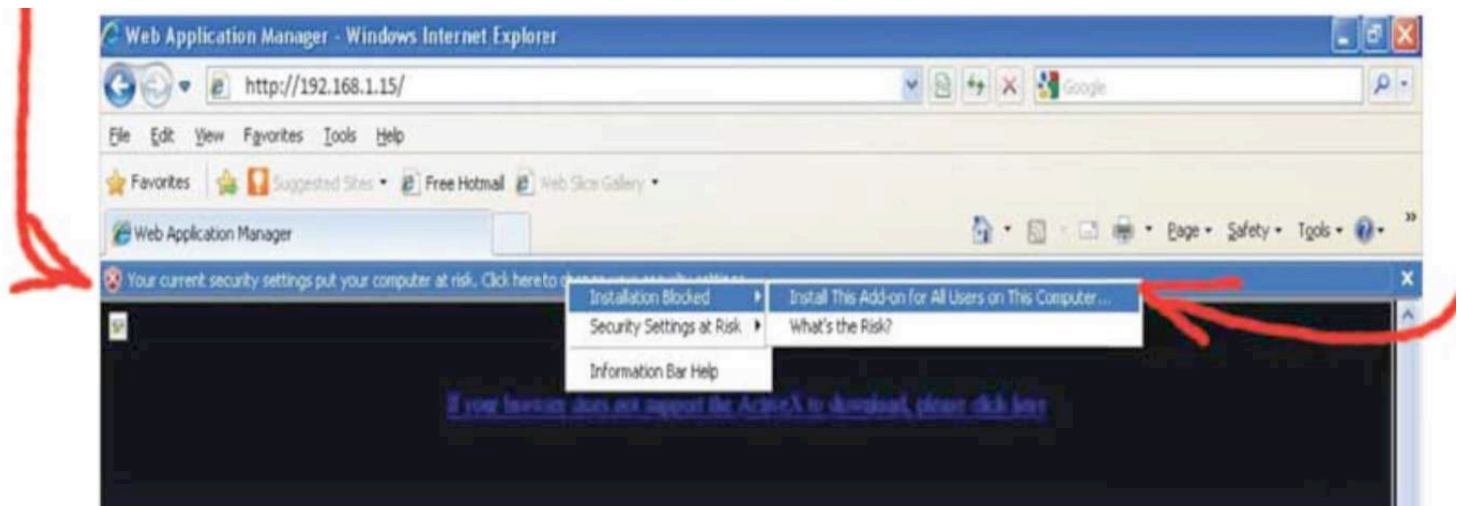
- Type in the browser after http:// the IP Address provided for the technician.  
In this example should be: http://192.168.1.15/



- Click in the warning tool bar.
- Select "Run Add-on" or "Install This Add-on for All Users on This Computer..."



OR



- You will receive a warning message. Click “Run”.



- After install the ActiveX Control, an interface will prompt you log in System. Filling in the right user name and password, you can see a monitor interface.

**After access to all feature in the DVR you should restore the setting to original state (Default Setting).**