

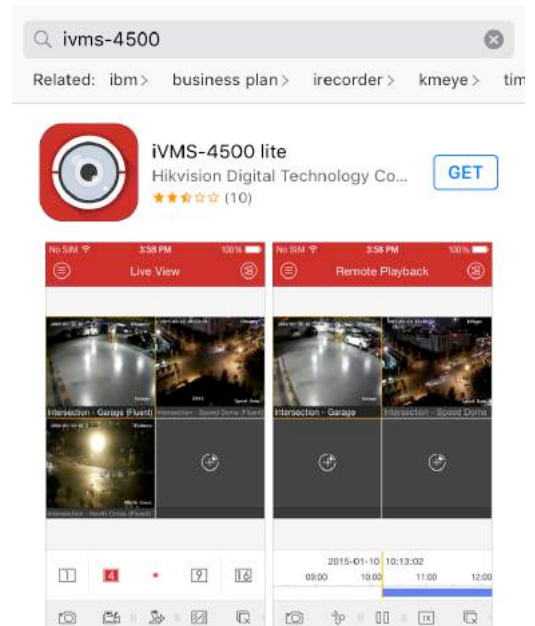
# HOW TO ADD AN APP

Follow these steps to add an app to your mobile device.

- 1) For Apple devices go to App Store. For Android devices go to Play Store.
- 2) Search for:
  - "CCTV Mobile" for Blue Technology, and download it.
  - "IVMS-4500" for Red Technology, and download it.

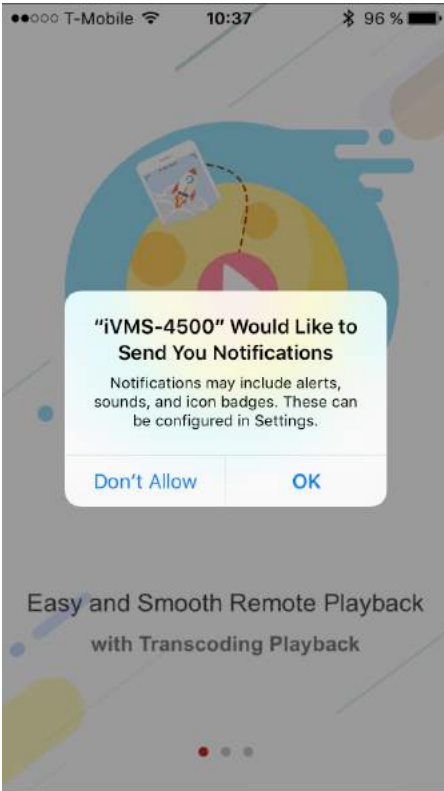


CCTV Mobile

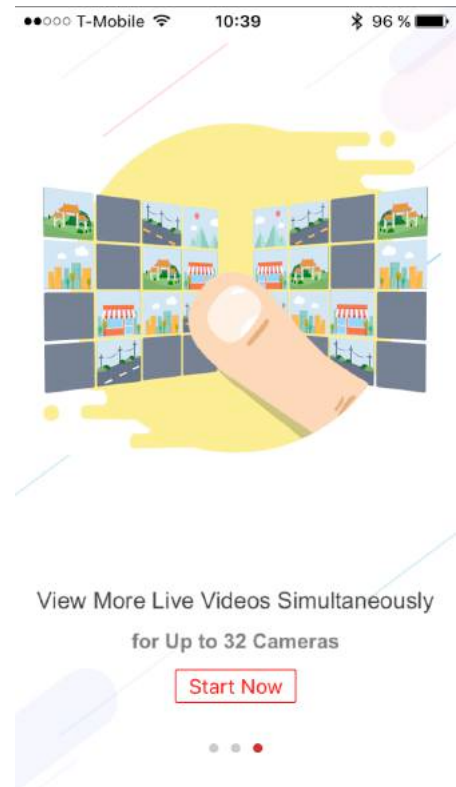


IVMS-4500

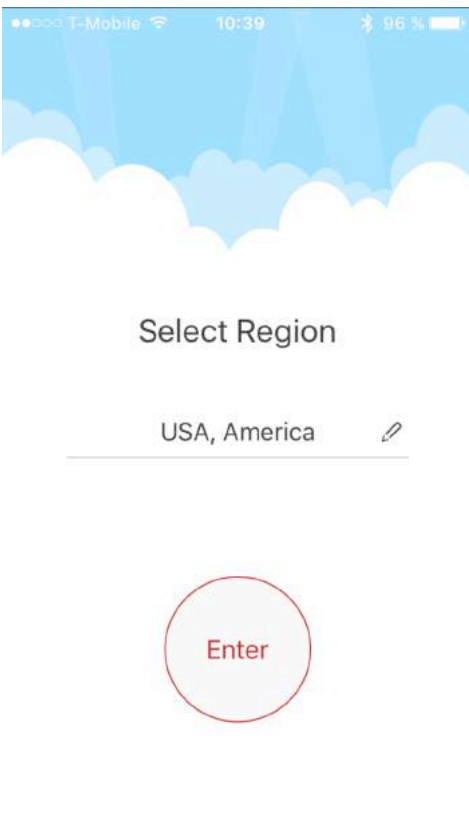
# SETTING UP YOUR MOBILE APP



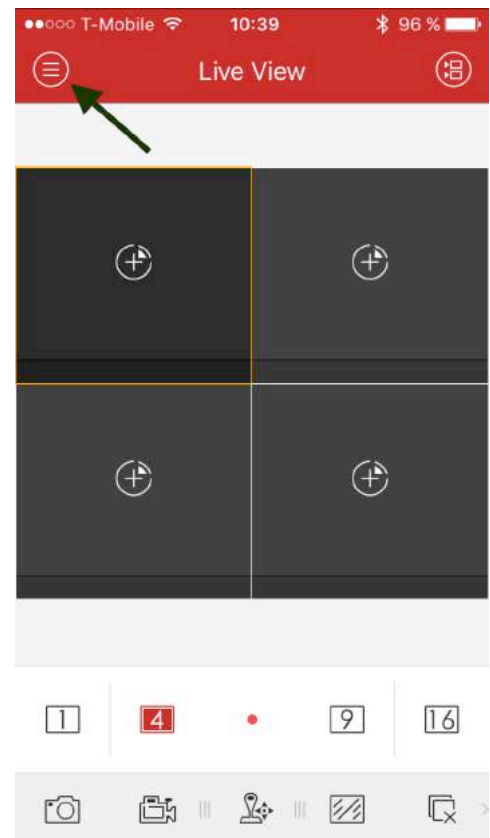
Click OK.



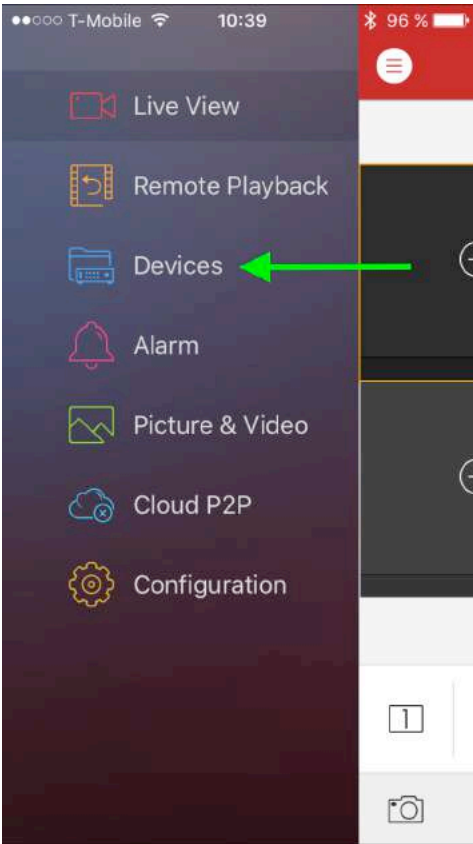
Click Start Now



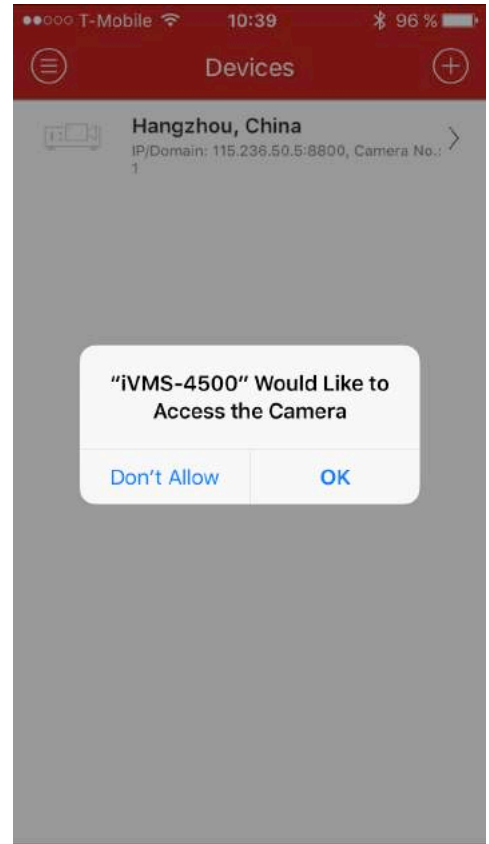
Click & Select the Region.



Click in the home button, in the left corner.



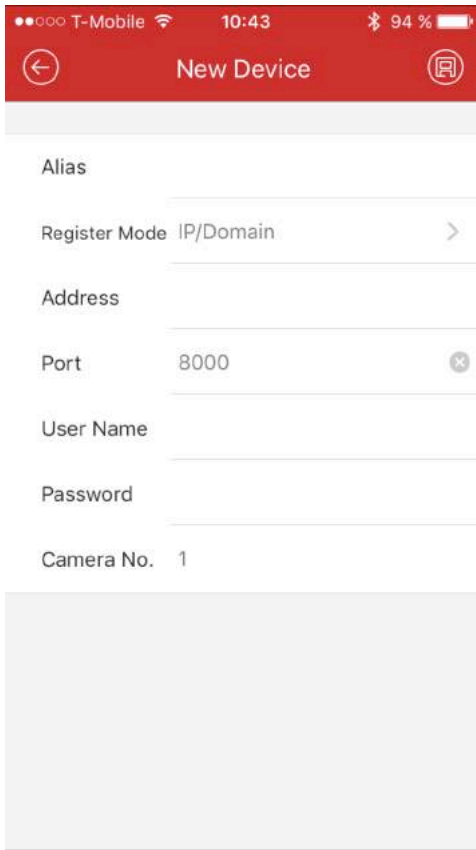
Click in Devices.



Click Don't Allow.



Click the plus + button. Click Manual Adding.



**Alias:** this is the name you want to name your DVR.

**Register mode:** Select IP/Domain.

**Address:** Type your IP address.

\* Find your IP in [www.pogt.net/support](http://www.pogt.net/support). Click in the link: What's My IP Address.

**Port:** information given by your tech team.

**User name:** information given by your tech team.

**Password:** information given by your tech team.

Click button in right corner.

Click start live view.



Done!